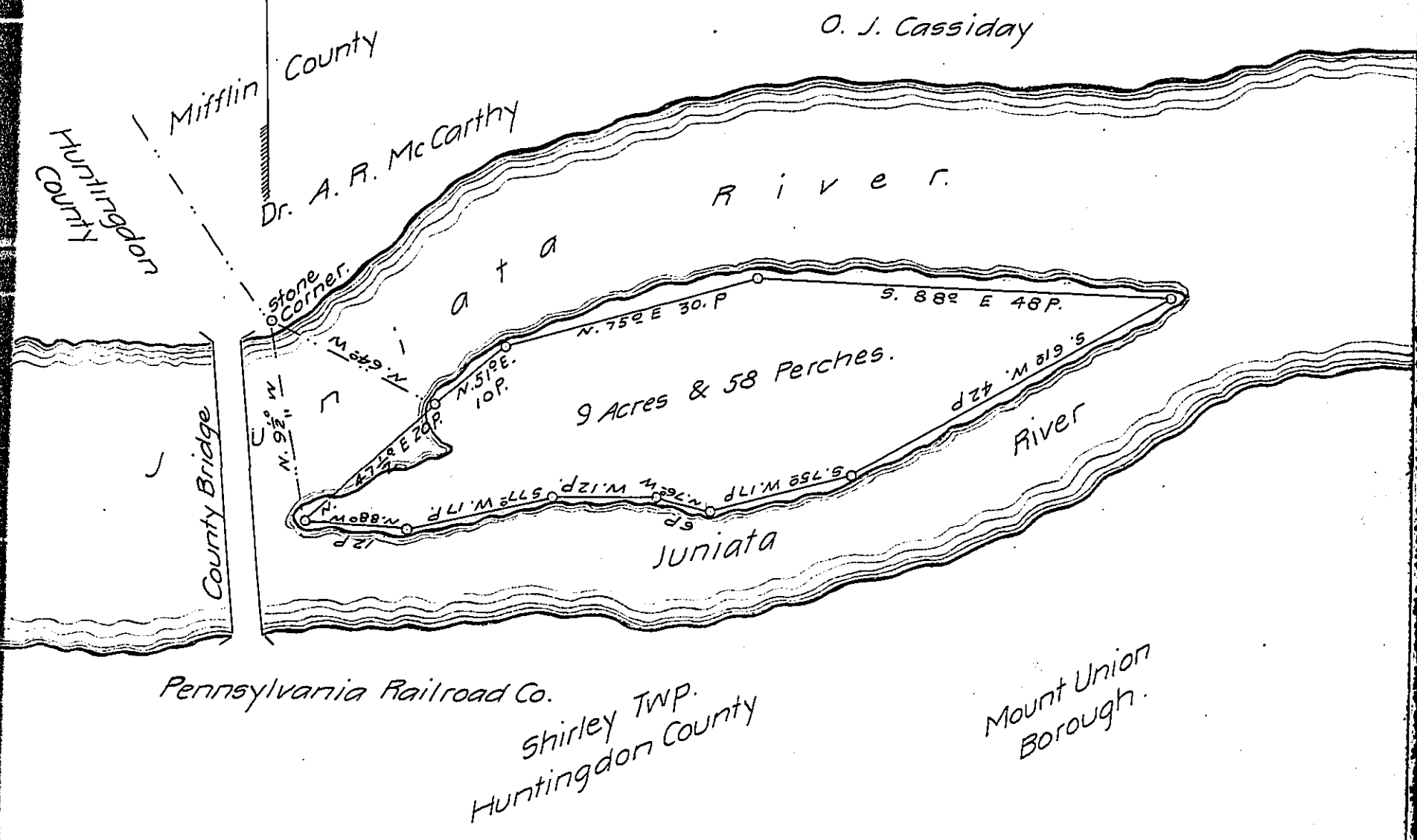


FORM NO 1.



A Draft of a Tract of Land situated in the Township of Shirley and County of Huntingdon, containing Nine acres, 58 perches ~~and allowance of six percent for roads, etc~~ Surveyed the 24th day of November 1908, in pursuance of a warrant granted to Thomas A. Appleby dated the 30th day of September, 1908.

To Hon. Henry Houch

Secretary of Internal Affairs

C. T. Evans County Surveyor

County Surveyor

Huntingdon Co., Pa.

Surveyed by F. S. Brewster.

IN TESTIMONY that the above is a copy of the original remaining on file in the Department of Internal Affairs of Pennsylvania, made conformably to an Act of Assembly approved the 16th day of February, 1833, I have hereunto set my Hand and caused the Seal of said Department to be affixed at Harrisburg, this twenty-sixth day of May 1909

Henry Houch
Secretary of Internal Affairs.